

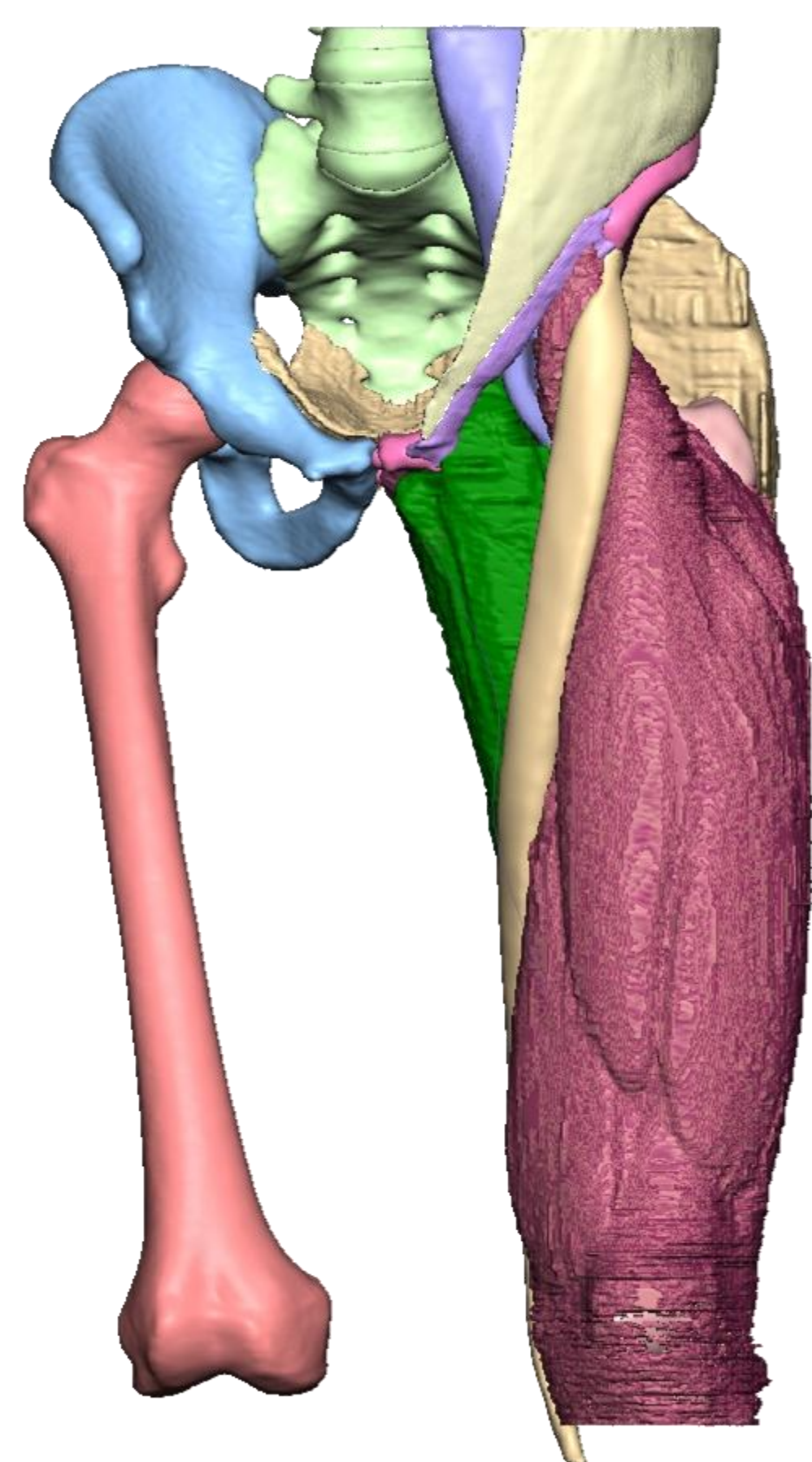


GIG
CYMRU
NHS
WALES



Swansea University
Prifysgol Abertawe

Trauma Simulation Ltd

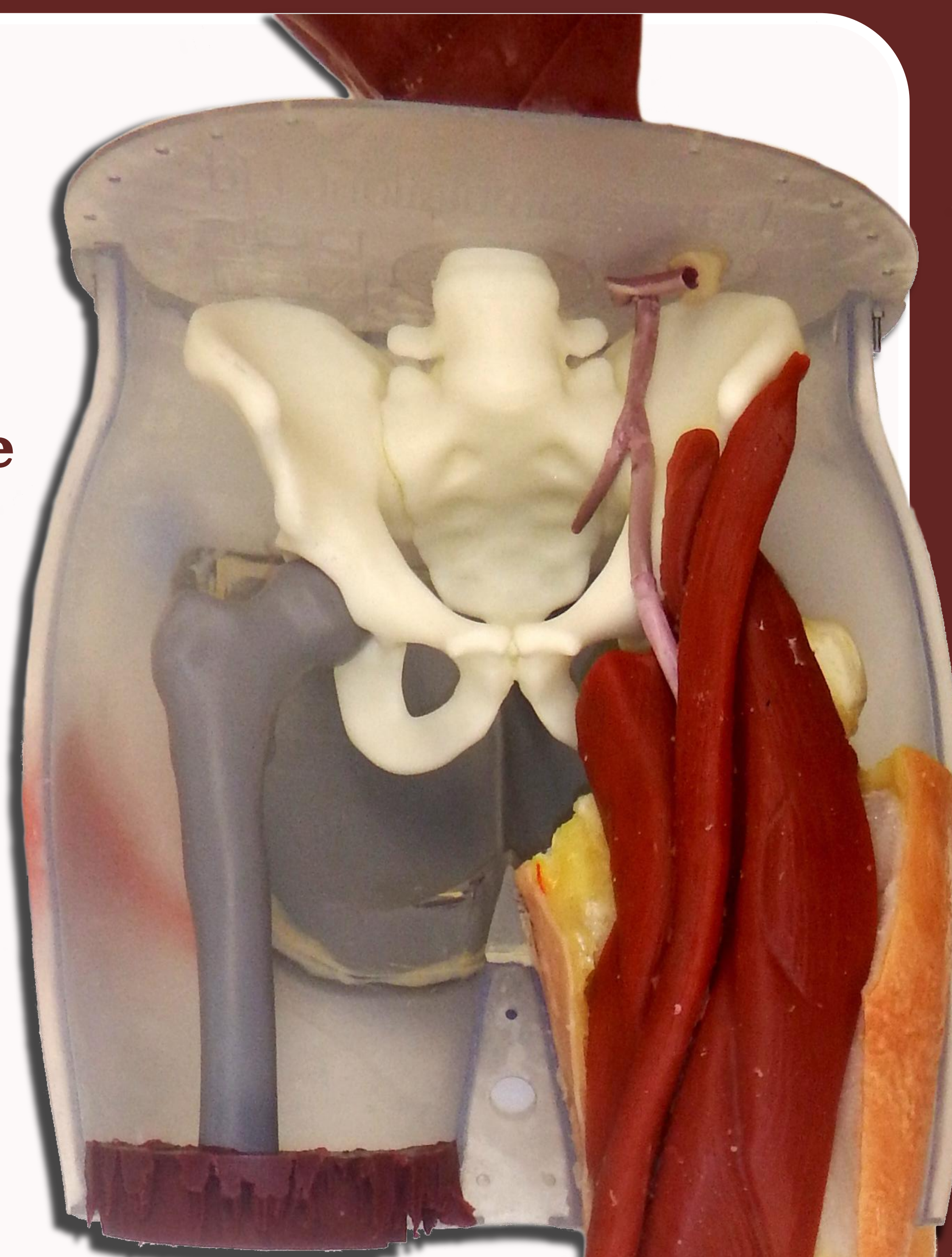


A Swansea University Spin-out Company

Developing complex life-sized
trauma models for surgical
training in the context immediate
point-of-wounding and damage
control interventions.



These models
replicate severe
lower limb and
pelvic trauma
from blast injury,
offering the
simulation of a
wide range of
procedures:



Haemorrhage Control:-

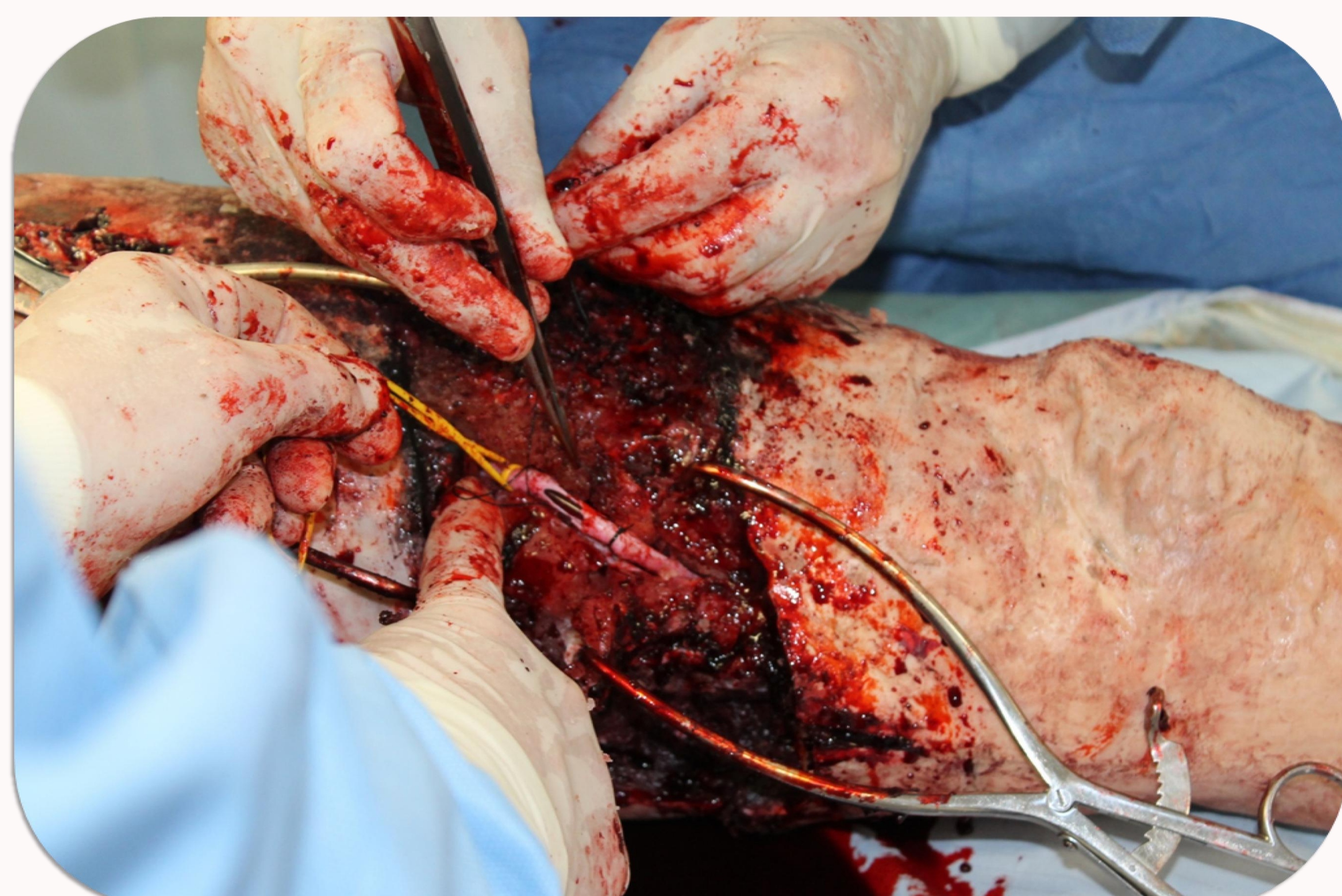
- Tourniquet application
- Pelvic Binder application
- Pelvic packing
- Junctional control proximal and distal to inguinal ligament
- Retrograde balloon occlusion of the aorta

Restoration of Perfusion:-

- Arterial shunt insertion
- Fasciotomy

Temporary External Fixation:-

- Pelvis
- Femur
- Spanning the knee or ankle
- Tibia



www.traumasimulation.co.uk